

Fuel Heads & Filters

Filter Dia. 93 MM (3.54") x 1"-14



Fuel Flow Range: up to 160 gph / 606 lph

Operating Pressure

0-100 psi (690 kPA) without bowl

Temperature Range

-40° to 250°F (-40° to 121°C)

Flow Rate

Up to 160 gph / 606 lph
See table for filter flow rates

Fuel Compatibility

#1 or #2 Diesel, Kerosene, Biodiesel up to B20 and JP8

Mounting

Engine or Chassis

Clean Pressure Drop (Restriction) @ Recommended Flow Rate

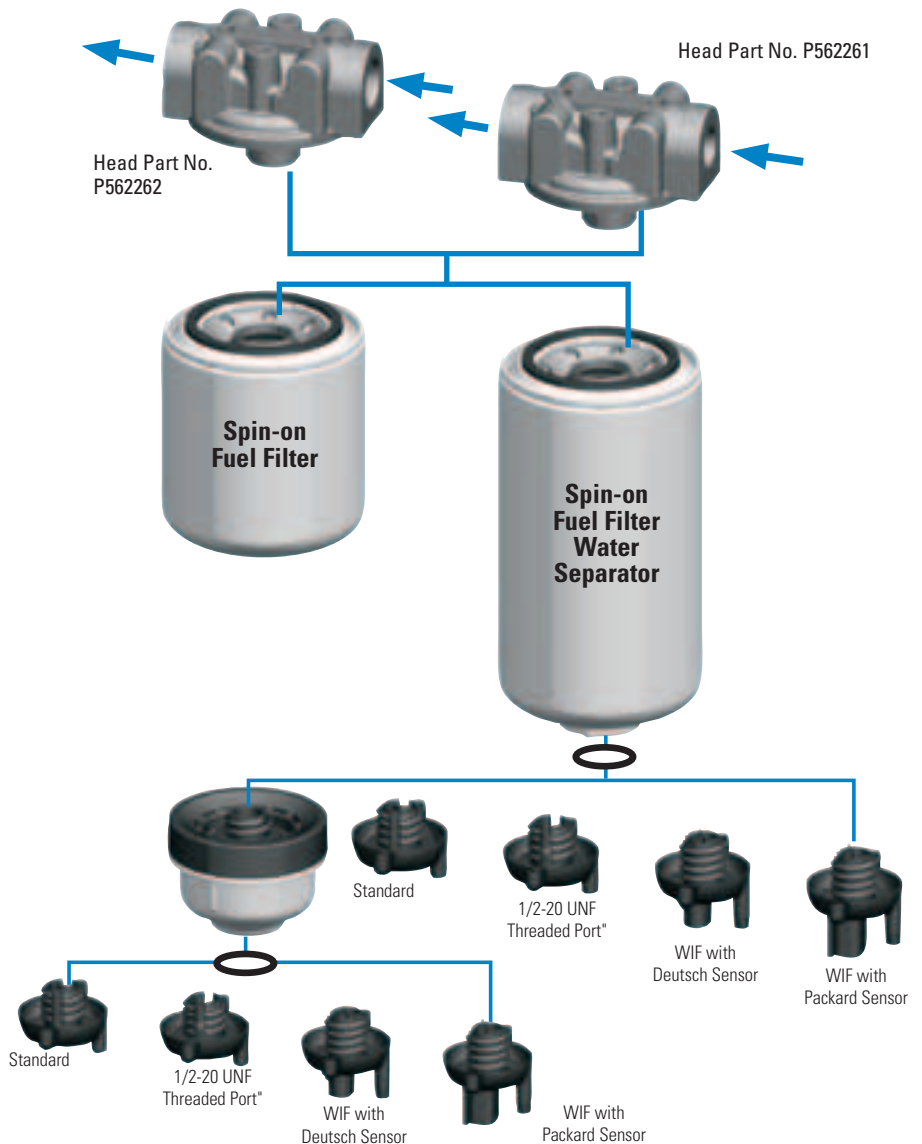
Δ kPA ≤ 6.9

Δ PSI ≤ 1.0

Water Removal @ Recommended Flow Rate

SAE J1488 Emulsified: 95% efficiency

SAE J1839 Free Water: 95% efficiency



Filter Selection Chart

Filter Style	Max. Recommended Flow Rate		(C) Filter Length* (includes standard drain)		Efficiency @ Micron	Stand Tube	Dia. 3.66 / 93 mm Item No.
	gph	lph	inches	mm			
Standard	90	341	7.38	187	99% @ 10	N/A	P550847
			7.68	195	99% @ 15	N/A	P558000
			7.61	193	99% @ 3	N/A	P553203
	100	379	7.68	195	99% @ 10	Yes	P551001
			8.64	219	99% @ 10	N/A	P553201
			8.64	219	99% @ 35	N/A	P553204
			8.64	219	99% @ 3	N/A	P553207
	120	454	9.70	246	99% @ 10	Yes	P551000
			9.71	247	99% @ 7	Yes	P550901
			8.40	213	99% @ 10	N/A	P550848
WIF with Packard Sensor	120	454	9.01	229	99% @ 10	Yes	P551122
			9.40	239	99% @ 10	Yes	P551103

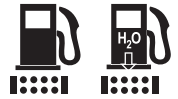
For water drain flexibility, Donaldson Twist&Drain Spin-on Filters have a connection that accommodates four types of drain valves and one clear bowl.



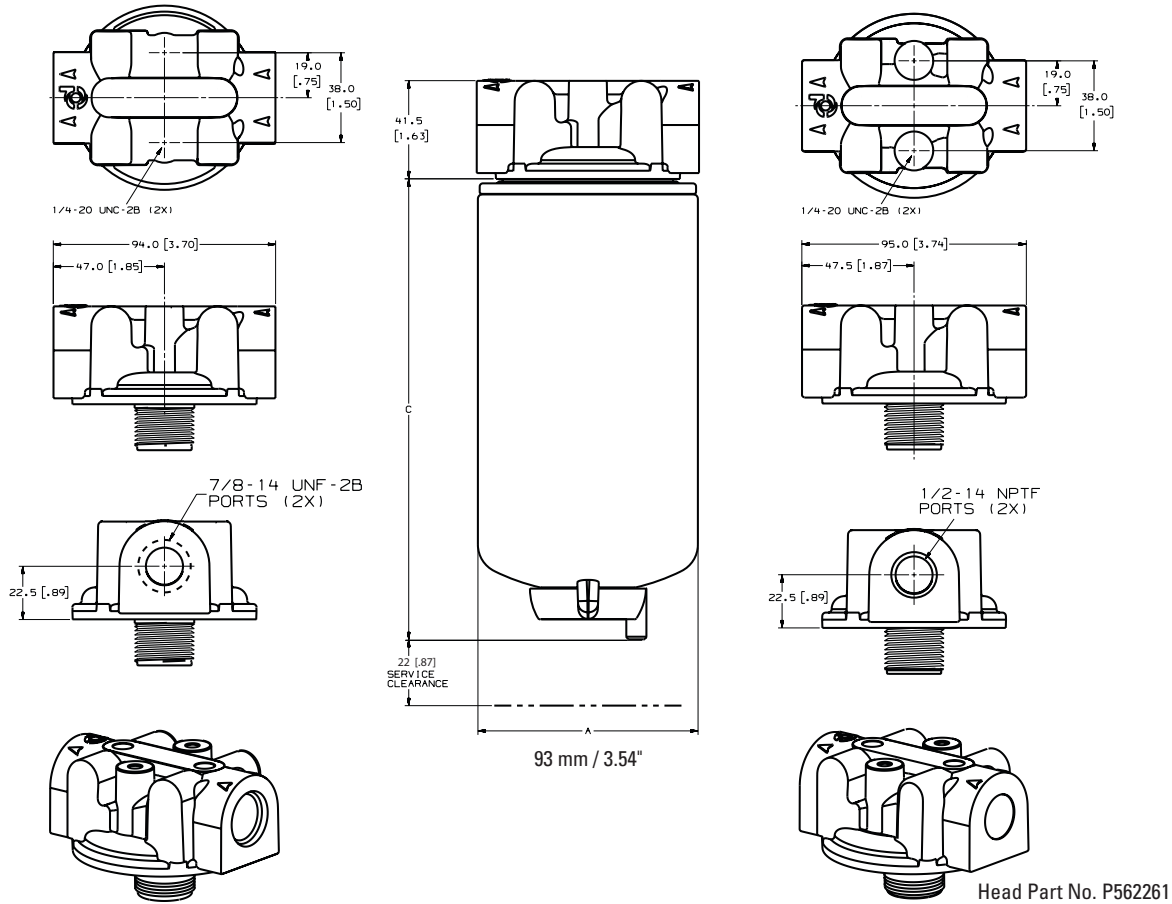
The filter selection tables shows which drain style is on the filter you're ordering.

Accessories for Twist&Drain filters can be found on page 50.

* Considering Drain Bowl? Add 1.98" / 50 mm to filter length.





Dimension Specifications



Head Part No. P562262

Head Part No. P562261

Filter Style	Max. Recommended Flow Rate		(C) Filter Length* (includes standard drain)		Efficiency @ Micron	Stand Tube	Dia. 3.66 / 93 mm Item No.		
	gph	lph	inches	mm					
 1/2"-20 Threaded Port for Sensor	90	341	7.61	193	99% @ 3	N/A	P553213		
			8.64	219	99% @ 10	N/A	P553211		
			8.64	219	99% @ 35	N/A	P553214		
			8.64	219	99% @ 3	N/A	P553217		
	120	454	9.22	234	99% @ 10	N/A	P552032		
	40		4.22	107	99% @ 25	N/A	P550104		
			60	227	5.35	136	99% @ 25	N/A	P550105
					5.35	136	99% @ 17	N/A	P552251
	5.78	147	95% @ 140	N/A	P552203				
	80	303	6.85	174	99% @ 25	N/A	P553854		
			6.85	174	99% @ 9	N/A	P557440		
	100	379	6.95	177	99% @ 3	N/A	P551313		
			7.40	188	99% @ 25	N/A	P550106		
			7.87	200	99% @ 9	N/A	P555627		
	120	454	8.69	221	99% @ 15	N/A	P552253		
	160	606	9.43	240	99% @ 9	N/A	P551712		
9.43			240	99% @ 3	N/A	P551311			

* Considering Drain Bowl? Add 1.98" / 50 mm to filter length.